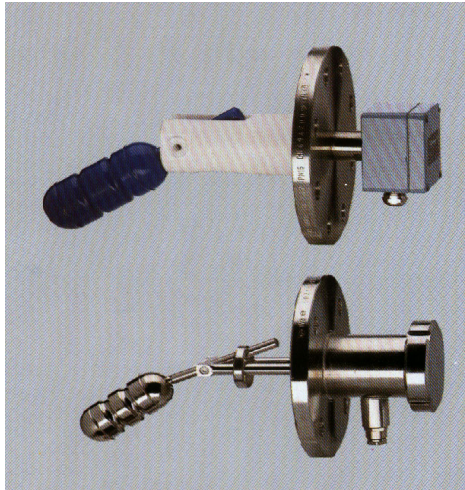




KSR Horizontal Level Switch Type HIF - ... / ... – VU – .. / ...



Technical Data:

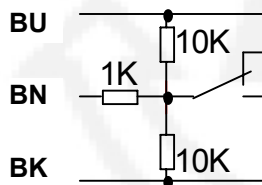
Terminal box : Aluminium, Stainless steel
 Process connection : to customer specification
 Switch : Reed contact – Change-over SPDT
 DIN EN 60947-5-6
 Switch rating : max. 60 VA
 max. 250 VAC/DC

Available materials :
 Stainless steel 316Ti, titanium,
 Hastelloy C4 /B2, coatings available
 e.g. E-CTFE

Float : to customer specification
 S.G. : min. $e \geq 450 \text{ kg / m}^3$
 Temperature : - 60 ... 400°C,
 Nominal pressure : max. 160 bar / 1500 #

ATTENTION: Do not install in ferromagnetic surroundings or the immediate vicinity of strong electromagnetic fields.

1 Switch point - change-over (SPDT)



* Dimensions to customer specification

